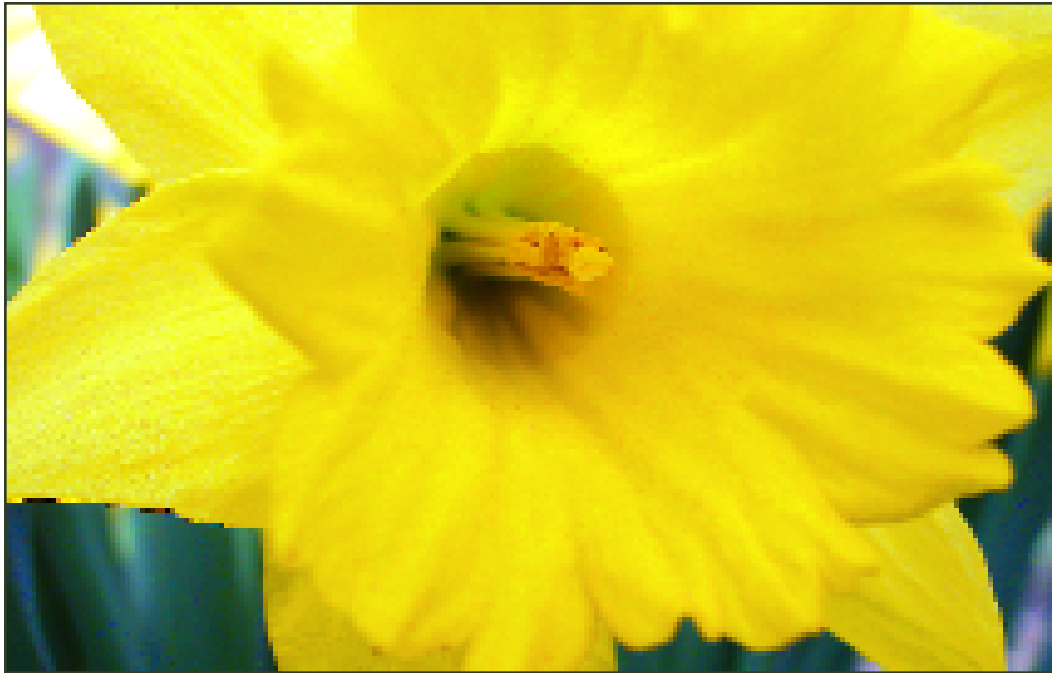


Helping dreams come true

Community Foundation of Susquehanna County

Newsletter Spring 2005



Inside this issue:

Shoe Shine Man & Handyman . . .	1
Chris Snee Helps United Way	2
Bob Welch Chairs United Way	2
Blue Ridge Foundation	3
Umlaff Fund	3
Peoples National Bank & PNC Bank Fund Preschoolers	4
Rose Conservancy Partnership	4
Floods Can't Stop Friends' Giving .	5
United Way Drive Sets Record	5
Art Project Unveiled	6
Tsunami Aid Delivered	6
Brad Conklin Wins Again	7
Don't Ask Debbie	7
New Funds Announced	8

A Shoe Shine Man and a Handyman

Lower and middle-income Americans are the unsung heroes of philanthropy. Families with incomes of \$100,000 or less contribute 59% of all philanthropic dollars. Among those sharing with others what they could very well use themselves is Albert Lexie of Pittsburgh. The 62-year-old lives on \$10,000 a year which he earns polishing about 15 pairs of shoes per day at local business. He saved \$90,000 over the course of many years from tips and donated it to a Free Care Fund at the Children's Hospital of Pittsburgh.

Joe Temeczko is a wiry, gold-toothed handyman who emigrated from Poland in 1950. When he fixed up old appliances and toys he found discarded on the curbs of Minneapolis he donated them to a church or a neighbor. Days after September 11th he

changed his will so that his savings would go to the City of New York. Two weeks later he died of a heart attack, leaving a fortune of \$1.4 million that surprised even his lawyer.

From a Business Week 11/19/04 article "Ordinary People, Extraordinary Gifts" by Lauren Gard



“We make a living by what we get. We make a life by what we give”

Winston Churchill

**Community Foundation
of Susquehanna County**

36 Lake Avenue • Montrose PA 18801 • T 570.278.3800 • F 570.278.3868 • foundation@epix.net
www.communityfoundationofsusquehannacounty.org

Marian S. Miskell
Editor

Market Share Development
Design

Montrose Publishing
Printing and Distribution

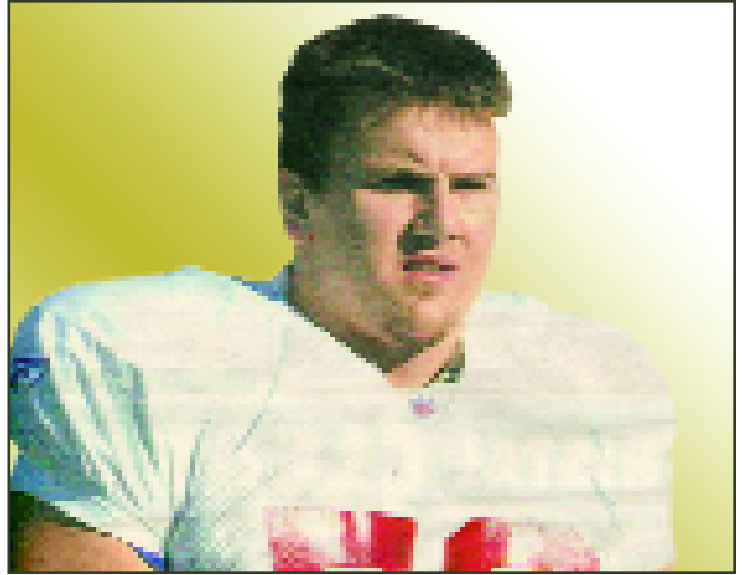
Chris Snee Adds Power to United Way Line-Up

NY Giants offensive lineman, 23 year old Chris Snee will be home to ride in the Montrose Fourth of July parade. He's been selected as Honorary Chairman of the 2005 United Way campaign, adding celebrity muscle to his hometown charity's 2005 Kickoff. In his honor, a Punt, Pass and Kick competition open to all boys and girls age 7-14, from Susquehanna County and beyond, will be held Sunday July 3rd starting at noon at Snee's alma mater, Montrose High. Contestants will receive prizes for gathering United Way sponsorship pledges before the event. For information call 570-278-3868.

Snee is soft-spoken drive blocker 6-2, 314 pounds who can bench press 225 pounds 29 times. But in school he showed he had scholastic strength as well and was a member of both the French Honor Society and the National Honor Society. This standout defensive lineman also excelled on his basketball squad and was a team captain for both sports.

That talent led to a three-year starter position at Boston College where he was an All-Big East first-team selection as right guard. In April 2004 the NFL came knocking when the Giants needed to protect their young quarterback Eli Manning. At the time Giants general manager Ernie Accorsi said, "Chris Snee is by far the highest-rated player at a need position, a critical position." Head coach Tom Coughlin describes Snee as able to play center in a pinch and an "an outstanding football player, a physical football player, athletic and able to pull."

Chris' decision to go with the Giants was made easier by the team's location. "I did a couple of interviews and they asked me where I would like to go and I told them I would like to stay on the East Coast since I'm from Pennsylvania. The Giants are two and a half hours from my house, so it's a great spot." Chris' parents, Diane and Ed Snee live in Montrose.



Pennstar Bank's Bob Welch Chairs United Way Cabinet

Robert J. Welch, Pennstar Bank's Vice President Regional Sales Manager for Susquehanna County has been chosen to be the 2005 Cabinet Chairman of the United Way. Bob has been a United Way board member for almost two years. He will be building upon four years of United Way momentum during which contributions have grown from \$40,000 in 2001 to a record \$135,000 in 2004.

"We want to do a lot better," he says. "With a little luck we could double that." He has 28 years of banking experience to bring to the effort. "We'll be organizing the campaign a little differently, and hope to divide the county geographically, assigning specific jobs to volunteers from each area." He expects to enlist his Pennstar managers from six Susquehanna County bank branches to help. Volunteers for all areas of the county are welcome to call Ruth Donnelly at 570 278-3868 to get involved.

Bob grew up in Endicott and moved to the Silver Lake area in 1981 with his wife Lori, also a banker. They have two grown sons. He is a member of the New Milford Rotary which has made a three year commitment to the United Way capital campaign. Bob is also a coach of the St. John Neumann Celtics girls' basketball team, which he started eleven years ago.



Robert J. Welch at his Pennstar Bank office on Public Avenue, Montrose

Blue Ridge School District Establishes Foundation

The Blue Ridge School District under the leadership of Superintendent Robert McNamara has established a foundation to support the educational and operational needs of its students. The Blue Ridge School District Foundation will be an affiliate of the Community Foundation. The move will allow the district to be more flexible in the investment of its donations for scholarships and other school improvements and may relieve the district of scholarship administration burdens.

Blue Ridge will retain its ability to direct its own scholarship funds. As the School District Foundation grows the School Board will select its own advisor group to manage grant-making and scholarships. About 1200 students are enrolled in the district and about 65 percent pursue higher education. Since low income families represent more than 36 percent of Blue Ridge students and about 13 percent

require special education, scholarships are tremendously important.

Superintendent McNamara's enthusiasm for the move was evident in his prompt personal donation to establish the foundation's first fund, The Blue Ridge Superintendents' Fund. Several other existing district scholarship funds may soon be added.



l to r: Joseph Burke, Foundation Director, Robert McNamara, Bob Brown, Foundation Director

Umlaff Fund: Growing and Rooted in Home Soil

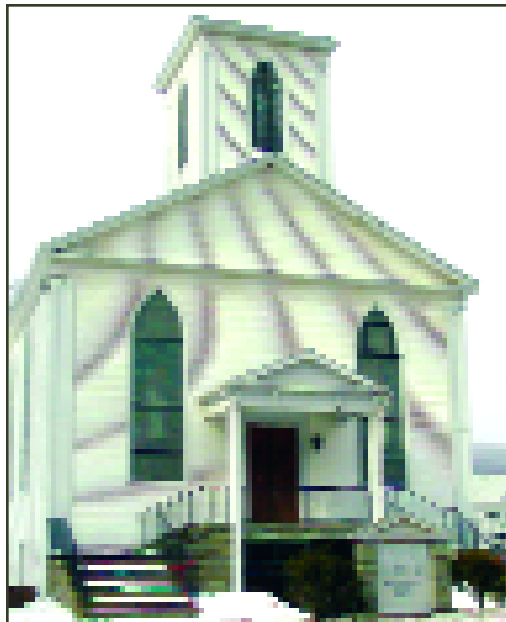
The Lanesboro Community Church is enjoying a 15% increase in payout from its endowment fund this year. The parishioners moved the fund to the Community Foundation and are seeing a much higher return.

The fund, established by a generous bequest of Mary M Umlaff, is used to pay Church operating expense. It had been languishing in a bank account where fees, structured to favor very large accounts, were eroding away its principle.

Besides bringing in better returns, there are other benefits to choosing the Community Foundation to manage your endowments.

In the event that the church, school, charity or agency you wish to support in future decades or centuries is dissolved, consolidated or moved, funds can be shifted up to the next organizational level far from the donor's hometown and intentions.

When your endowment is held by the Community Foundation, you can stipulate that its proceeds remain within the county, even if the particular charity you select in your will is for any reason gone.



Board of Directors:

Earle A. Wootton
Chairman

William R. Lewis
Vice Chairman

James May
Treasurer

Betty Kwader
Secretary

Marian S. Miskell

Joseph T. Burke

Thomas Chamberlain

Robert J. Brown

Jason J. Legg

Helping
dreams
come true

Peoples National Bank and PNC Bank Fund Preschoolers

Fourteen local families have received preschool scholarships thanks to generous donations from Peoples National Bank and PNC Bank to Community Foundation education programs. Appreciative parents from Children's Palace of Hallstead, Angel Beginnings, Creative Play Preschool of Susquehanna, and Endless Mountain Learning Center of New Milford received over \$37,660 for tuition.

Since opening Children's Palace last August Linnette Ryman has enrolled 20 children ages 9 months to 12 years. Without scholarships some parents were unable to enroll children, or could afford only one or two days per week. That situation limited their employment options. Also, Ms Ryman's school employs four other professionals making Children's Palace an economic as well as an educational asset.

One father, Bob Reynold who has a life threatening illness reports that the scholarship has freed up dollars for him to establish a TAP college savings account for his son. Other parents thanked bank and foundation executives for "helping my son to be a better human being," "giving me the opportunity to do a lot of things that needed to be taken care of," and providing the assurance that "when I'm at work she's learning."



Getting down with the kids: (from left) George Stover of Peoples, Community Foundation Director Joe Burke, and Peoples executives Debra Dissinger, and Jack Ord join parents and preschoolers in celebrating their scholarships.

“He who gives what he would as readily throw away, gives without generosity; for the essence of generosity is in self-sacrifice”

Henry Taylor

Rose Conservancy Partnership

The Foundation is pleased to announce its expanded relationship with the Edward L. Rose Conservancy. Beginning in 2005, the Conservancy will maintain an agency account fund with the Foundation. This is a new Foundation service offering to donors. Funds in an agency account are invested in a diversified portfolio of conservative stocks and bonds designed for growth.

The account funds will still be available to the Conservancy at any time to meet the needs of its mission to conserve land and water, preserve scenic beauty and wildlife sanctuary throughout the county. The Conservancy can expect a much better rate of return than they currently receive on their funds, and its Board will be relieved of investment decisions and administration.

Foundation donors interested in land conservation may find the Rose Conservancy offers opportunities for meeting their needs.



www.edwardroseconservancy.org

Helping dreams come true

Floods Can't Stop Friends' Giving

The Friends of Susquehanna County Holiday Gala Open House and Auction filled the Foundation's 1866 historic home with supporters who sampled festive foods, enjoyed music by the Blue Ridge Brass ensemble and theatre group, and bid silently on gifts.

Fall flooding at the Green Gables Restaurant caused an earlier scheduled event to be canceled. The unstoppable Friends got to work calling on ticket holders and patrons. Despite the deluge, they managed to once again honor their commitments to the charities of Susquehanna County.

The Friends presented \$1,000 in donations to Greg Myer of Habitat for Humanity, Ann Marie Witko of the Women's Resource Center, June Wootton of Endless Mountain Theatre and Creative Adventures for Education. In addition, for the second year the Friends provided \$5,000 to the United Way Capital

Campaign Fund; they intend to repeat that generosity next year.

This same dynamic organization under the name of Friends of Barnes Kasson raised over \$50,000 for a hospital dialysis chair, two birthing room beds, an arterial blood gas machine and a chapel or meditation room. They are currently building a permanent endowment fund at the Foundation.



June Wootton of Endless Mtn Theatre Co., Ann Marie Witko of WRC, Nancy Hinkley of Friends of S.C. and Greg Myer of Habitat for Humanity.

United Way Drive Sets \$135,000 Record

In four years since the founding of the United Way of Susquehanna County by the Community Foundation its annual campaign results have increased more than threefold. Donations of \$40,000 in 2001 doubled in 2002 to \$80,000, rose again in 2003 to \$115,000 and hit a record \$135,000 in 2004.

At an annual celebration on January 14th at the Montrose VFW Hall, United Way President Joseph Burke expressed thanks to the community and urged volunteers to redouble efforts next year. He believes a one dollar per week donation from just half the county's employed workers is attainable. That would generate \$500,000 per year in support to local agencies. Operations Manager Ruth Donnelly and this year's

campaign co-chairpersons Cathy Chiarella and Marilyn Talboys hosted the event.

Local agencies and affiliate agencies served by United Way in 2004 include Interfaith, Literacy Program, Historical Society and Free Library, Girl Scouts and Boy Scouts of America, American Red Cross, American Heart and Lung Associations, Creative Adventures for Education, CareNet Pregnancy Center, End of Day, Inc., Habitat for Humanity, Women's Resource Center, Self Discovery Wellness Arts Center, Hemodialysis Association, NE Rail-Trail Council, Friends of Salt Springs, Montrose Restoration Committee, Humane Society, Tri County Human Services Center, Volunteer Action Center, and Endless Mountain Theater Co. .



Seated far right: Joseph Burke, United Way President, celebrating close of United Way 2004 campaign with fellow board members, campaign volunteers and recipient agencies.

“Friendship, like money, is a trust, a stewardship, a responsibility.”

William Arthur Ward

Facts at a Glance

In 2004, your foundation provided:

- 133 scholarships
- Over \$400,000 in total benefits to Susquehanna County

Helping dreams come true

Art Project Unveiled

On February 26th Betty Bryden, Director of the Rosemont Inn Art Project, unveiled the four original works which have been chosen for 2005 to be part of the Inn's permanent collection. It is the first art collection in the county which remains accessible to the public. The Art Project will generate charitable dollars as well as cultural benefits for the county. Proceeds from the sale of limited edition prints of these works will go to create an annual Community Foundation grant.

The works are:

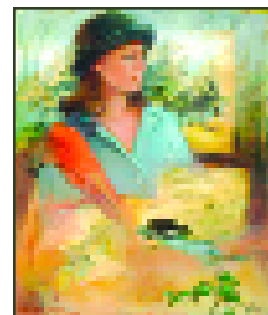
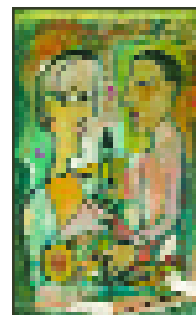
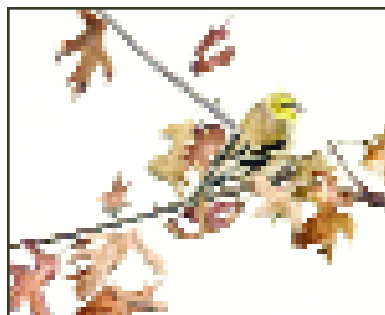
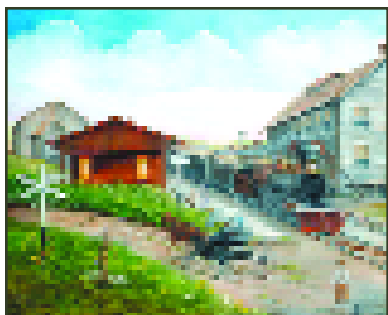
Heart Lake Railroad Station by Carol Brown: A folkloric 1900 view of the lakeside resort destination painted by Montrose's Tea Time Art Studio owner. The work demonstrates her nostalgic motto, "Memories from the past - treasures for the future."

Winter's Gold by Linda Truman: A male American goldfinch perched on a pin oak bough is captured with simple elegance in watercolor. The artist also works in pastels and is self-taught. She is celebrated for her observations of birds, and other intricate portrayals of the natural world within small landscapes.

Break Time by Joe Welden: An acrylics, ink and texture painter and part-time jazz musician combines these interests and his fascination with the construction and 'look' of musical instruments. What started out as a "very quick drawing" has been painted and progressed with acrylics.

Soliloquy of Summer by Martha Sampson: This portrait from life evolved into a summer collage after its model was unable to return for more sittings. The "purely un-premeditated" piece builds its theme with an antique summer camp brochure, spruce tress, figures and even a sprig of poison ivy.

Just 50 high quality giclee prints of each work will be available to the public framed or unframed, on canvas or fine art paper, individually or as a set. Prints on canvas are banded with color and suitable for hanging unframed. Prices range from \$90 to \$245 each. A discounted complete set of prints costs \$500 unframed, \$725 framed. Purchase includes a signed certificate of authenticity. To order contact Betty Bryden at (570) 278-7600.



“America has had a long and rich tradition that began with simple acts of neighbor helping neighbor.”

Helen Boosalis

Tsunami Aid Delivered

County donors made use of the Community Foundation's alliances with reputable agencies to deliver tsunami donation dollars to the Disaster Relief Fund. Those gifts were part of over \$400-million contributed to U.S relief groups.

As a member of the Council of Foundations (COF) your Community Foundation has the expertise to determine the greatest need and to direct donations to cost effective programs as desired by the donor.



Brad Conklin Wins Again

The Brad Conklin Memorial Basketball Scholarship Fund received a stunning boost in February when Brad's name was pulled as the winner in a 300 ticket Seton Hall Booster Club raffle worth \$10,000 in cash. The winning ticket was picked by Seaton Hall Center, Sam Thomas, who took Brad's spot on the team after his death.

Coach Chris Sinicki is often asked how he can explain his small team's surge this year from a mediocre standing to 18 winning games, top spot in their division and winner of the Southern Tier Athletic Conference – a conference including many much larger teams. He says, "Brad's still with us in spirit. Sometimes it feels like we're playing 7 against 5." When the Coach was passed the winning ticket and announced Brad's name, the auditorium was brought to tears. "The big guy is up there still bustin' my chops," he told Tony Cerasaro.

"Talk about fate!" says Tony, who is Brad's uncle and the initiator of the scholarship fund. Tony 'just bumped into' Cathy Furner, Booster Club Chair, at the

Wednesday night game before the drawing. He asked her how the raffle ticket sales were going. Cathy said the \$100 tickets had all sold out, but she just had two unsold tickets returned. Tony, a long time supporter of the team, bought one and put Brad's name on it. "They needed a phone number. We didn't know his number up there, so we put Sandy's phone number on the ticket." State Representative Sandy Major is Brad's aunt.

That same night tiny CC-ranked Seaton was playing Binghamton Central, a Class A powerhouse. Seaton won. Brad's player number 34 has been retired, and he will continue to hold it.



Don't ask Debbie, Unless You Really Want to Get Things Done

Debra Dissinger is a grandmother of four and a bank executive. She is a Blue Ridge High graduate, an honors graduate from the University of Colorado Graduate School of Banking, and a graduate and instructor for the American Institute of Banking. She began her career as a bookkeeper and rose to become Executive Vice President/Chief Operations Officer of People's National Bank plus a Director of the Federal Reserve Bank of Philadelphia.

Debbie lives in Locust Hill outside of Susquehanna and was born and raised in Great Bend, the daughter of Don and Lois Waterman who owned the Corner Store there in the 1970's and 80's. Her ancestry in the county goes back to 1872 when John Mitchell Waterman resided in Lathrop Township in Pine Grove.

She is a founder of Project KIDDS (Kids in Desperately Dangerous Situations), a chairperson for Bridging Communities Project, is active in Maternal and Family Health Care Services, the Special Olympics,

Boy Scouts and Leadership 2020.

She's not bored and in need of something to do. Why then would she accept a nomination to be on the United Way Board of Directors? "I appreciate being able to work for multiple organizations," with that one position. "The United Way is broad-based. I couldn't otherwise do so much for so many." Anyone wishing to join Debbie as a volunteer to help the United Way or the Community Foundation call 570.278.3868 or contact foundation@epix.net .



Current Funds

L. Carter & Elizabeth Anderson Fund
 William & Deborah Lewis Fund
 Montrose Restoration Fund
 Gregory & Eileen Myer Fund
 People's National Bank Fund
 Earle & June Wootton Fund
 Robert & Katherine Warriner Fund
 Mary M. Umlaff Fund
 Directors Dedication Fund
 The Friends of Salt Springs Fund
 The Mary K. Leasure Fund
 The Mary & Kenneth Leasure Fund
 Raymond L. Bennett Scholarship Fund
 William Dean Memorial Fund
 The GRW Fund
 Jonathan Randall Memorial Fund
 The Deborah A. Burke Breast Cancer Fund
 The Julia A. Frystack Scholarship Fund
 The United Way Endowment Fund
 CFSC General Fund
 The United Way Capital Campaign Fund
 The Jones Family Fund
 The Norman Brunner Memorial Fund
 The Friends of Susquehanna County Events Fund
 The Friends of Susquehanna County Endowment Fund
 Nicholas Severcool Scholarship Fund
 Agnes & James W. Holbert Scholarship Fund
 Bradley David Conklin Memorial Basketball Scholarship Fund
 June J. Wootton Fund for Hospice and Palliative Care
 Marian & John Miskell Family Fund
 Feed a Friend Fund
 Ferdinand Graf Memorial Scholarship Fund
 Business & Professional Women's Scholarship Fund
 Blue Ridge School District Foundation
 The Blue Ridge Superintendent's Fund
 The Montrose Area School District Fund
 Vicki's Fund, Prevention of Domestic Violence

Community Foundation of Susquehanna County

36 Lake Avenue • Montrose PA 18801
www.communityfoundationofsusquehannacounty.org

Spring 2005

page 8

New Funds Announced

Blue Ridge Superintendent's Fund

First fund of the Blue Ridge School District Foundation
By Robert McNamara to support the educational needs of the district

Feed a Friend Fund

To support food banks and emergency situations

Ferdinand Graf Memorial Scholarship Fund

By Susan Pipitone, daughter and Margaret Graf, wife of the late Fred Graf of New Milford; for a Blue Ridge student who demonstrates wrestling sportsmanship

John & Marian Miskell Family Fund

To support ongoing Foundation operations

Montrose Area School District Foundation

To establish an endowment to fund MASD scholarships

Montrose BPW Scholarship Fund

In memory of Audrey Kelly, Beatrice Whitney and Ann Welles

Vicki's Fund for the Prevention of Domestic Violence

By Vicki Clary's coworkers at the Independent in her memory



Helping dreams come true